



## Price List

Innovative Wood Testing Systems for  
Trees and Timber Structures



# Table of Contents

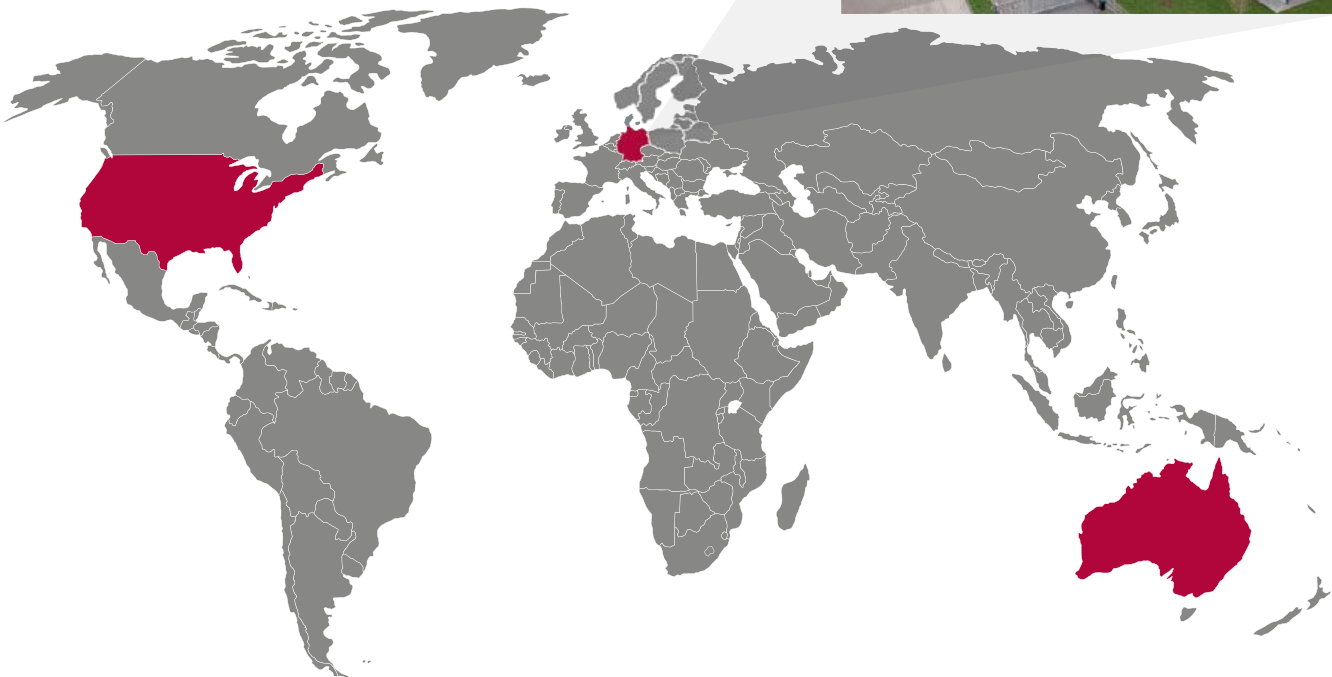
Innovative wood testing systems for trees and timber structures

|  |  |       |
|--|--|-------|
| <b>IML Company</b><br>Learn more about IML                 | About us – From the Vision until Execution                   | 4-5   |
| <b>IML-RESI Systems</b><br>Drilling resistance instruments | IML-RESI MD300   | 6-7   |
|  | IML-RESI PowerDrill-Series                                   | 8-17  |
|  | Software & Addon Modules                                     | 10-11 |
|  | Optional Accessories   | 12-13 |
|  | Disposables & Spare Parts                                    | 14-16 |
|  | IML-RESI F-Series  | 17-22 |
|  | F-Series for Tree Inspection                                 | 19    |
|  | F-Series for Construction Wood                               | 20    |
|  | Disposables  | 21    |
|  | Accessories & Spare Parts                                    | 22-23 |
| <b>Measurement of the bending and compression strength</b> | Fractometer I  | 24    |
|  | Fractometer II   | 25    |
| <b>Core extraction</b>                                     | Increment Borer „Jim-Gem“                                    | 26-27 |
| <b>Sound velocity measurement</b>                          | IML Micro Hammer   | 28-29 |
| <b>Service &amp; Calibration</b>                           | Annual Service Inspection                                    | 30    |
| <b>IML Tree Labels</b>                                     | IML Tree Labels & Accessories                                | 31    |
| <b>Tree-ring analysis</b>                                  | IML Measuring Table  | 32    |
| <b>Construction Wood Accessories</b>                       | Treatment Test on Wooden Poles / Pole Gauge                  | 33    |
| <b>Tree Inspection Accessories</b>                         | IML Probe Rod / IML Inspection Rod                           | 34    |
| <b>Prof.Dr.Claus Mattheck</b>                              | IML Penetrometer / Stainless Steel Model / VTA-Pebble Hammer | 35    |
| <b>Tree Literature</b>                                     | Our Selection of Books                                       | 36-38 |
| <b>General Delivery and Payment Terms</b>                  | Disclaimer / General Delivery and Payment Terms              | 39-41 |

## From Vision to Execution

Since its founding in 1985 in the technology park of the University of Heidelberg, Germany, Erich Hunger's vision has been to create innovative products that are reliable, powerful, and user-friendly. Driven by his passion for technology and unwavering dedication, IML has been simplifying work for its customers for over 35 years.

With a wide range of products, IML demonstrates the power of technical precision and sustainable business practices. The company's innovative spirit and uncompromising quality standards are evident in products for wood inspection, the dental industry, and precision parts. IML's commitment to providing clear added value for every customer is the cornerstone of its success.



Because of the increasing demand in the US and the challenge of supporting the customers overseas optimally, the logical consequence was to found another IML Branch in Georgia (1997).

To meet the increasing demand in the US and effectively support overseas customers, IML established a branch in Georgia in 1997. This expansion allowed for improved service, shorter delivery times, and direct customer contact on site, reinforcing IML's commitment to quality.

Since 2013, IML has been serving its growing customer base from New Hampshire. Additionally, the establishment of IML Australia further expanded the company's global reach.

Erich Hunger's emphasis on reliability and consistent quality is a cornerstone of IML's success. His sons, Sebastian and Fabian, are dedicated to ensuring that the company continues to thrive in the decades to come.

Unveiling the Invisible:

IML's measurement and testing instruments provide reliable insights into potential internal damage that remains undetected by external inspection.



## For Trees and Construction Wood: Trust is Good, Control is IML

Trees, wooden poles, playground equipment, and houses—their true condition often lies hidden beneath the surface. IML's drilling resistance measuring devices offer a clear window into the internal health of these structures, revealing potential damage that's invisible to the naked eye.

Combining deep knowledge of wood science and cutting-edge technology, IML delivers reliable and scientifically recognized measurement results.

For decades, major telecommunication companies, energy suppliers, and transportation authorities have relied on IML. Countless tree experts, playground inspectors, and engineers trust IML because they know that RESI is the gold standard.



Product  
Consulting  
Contact

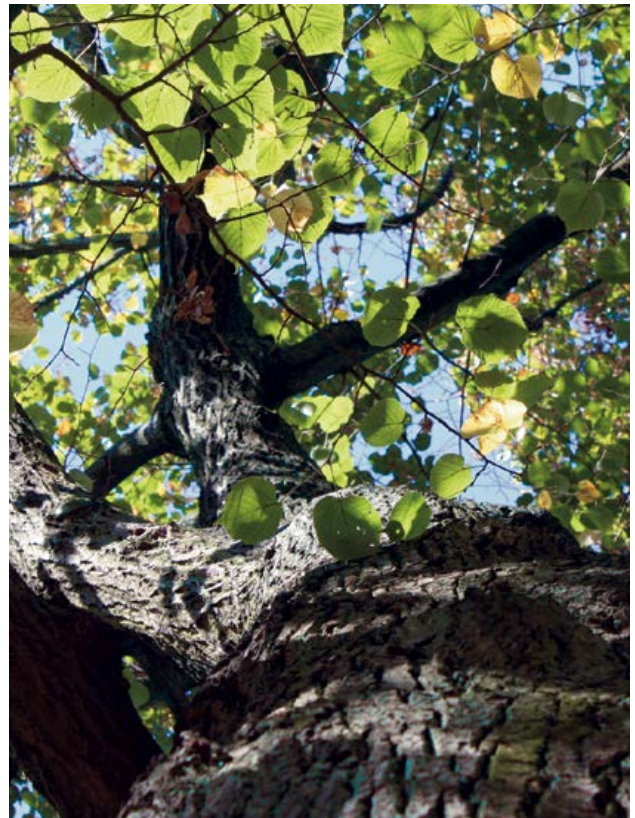
We look forward to introducing you to our innovative wood testing systems. Please feel free to contact us at any time.

**IML – With Passion and Precision**

Phone: +1 603-253-4600  
Email: [info@iml-na.com](mailto:info@iml-na.com)  
Web: [www.iml-na.com](http://www.iml-na.com)

# IML-RESI MD300

Lightweight hand drill, fast and easy to use



# IML-RESI MD300

Lightweight hand drill, fast and easy to use

## IML-RESI MD300

The IML-RESI MD300 is a purely mechanical drill that provides real-time tactile feedback. Users can directly observe penetration depth on the 11.8 inches (300mm) scale. The device's sensitivity allows for the detection of subtle changes in wood density, such as rot zones and even individual conifer year rings.

- Cordless drill as drive unit
- Sturdy stainless steel housing
- Easy to read 1:1 depth scale
- Diameter of the drilling needle:
  - Needle tip:  $\varnothing$  3,0 mm
  - Needle shaft:  $\varnothing$  1,5 mm
- Available drilling depth 11.8 inches (300 mm)
- Drill spindle for external drill:  $\varnothing$  12 mm

Scope of Delivery (Standard):

- MD300 drill attachment depth 11.8 inches (300mm)
- 2 x drilling needle (Length 387 mm)
- Chuck key (hexagon socket 2,5 mm)
- Instructions manual



IML-RESI MD300



Drilling depth scale 1:1

|  |                  |             |
|--|------------------|-------------|
| IML-RESI MD300<br>without drill (only MD300)   | Item No. 4000150 | \$ 995.00   |
| IML-RESI MD300<br>with Bosch drill GSR 18V Li-Ion Professional<br>- incl. 220V Li-Ion 18V battery charger + 2x Premium Li-Ion batteries 18V 5,0 Ah | Item No. 4000152 | \$ 1,700.00 |

## Optional Accessories

### IML-RESI MD300

|  |                   |           |
|--|-------------------|-----------|
| Drilling Needles IML-RESI MD300 (10 Pieces per Pack)<br>Length 387 mm                      | Item No. 3100317  | \$ 200.00 |
| Quiver for MD300 Drilling Needles<br>For safe storage of approximately 50 drilling needles | Item No. 3103016  | \$ 35.00  |
| System Transport Case<br>incl. foam inlay and key  | Item No. 3100313  | \$ 380.00 |
| Fast Charger 220V<br>for 18V Li-Ion Premium Batteries                                      | Item No. 30009934 | \$ 170.00 |

# IML-RESI PowerDrill®

Uncompromisingly precision for all applications





# IML-RESI PowerDrill®

Uncompromisingly precision for all applications

## IML-RESI PD-Series

The IML-RESI PowerDrill® is your go-to tool for reliable and accurate wood testing. Designed for optimal performance and user comfort, it offers:

- Intuitive Display: Easy-to-read digital display for clear results.
- Rapid Data Capture: Quick and efficient data recording.
- Ergonomic Design: Reduced fatigue and increased productivity.
- Powerful Performance: High drilling speed with minimal energy consumption.
- Durable Construction: Rugged, splashproof aluminum housing for long-lasting reliability.
- Advanced Features: Simultaneous recording of drilling resistance and feed rate for enhanced decay detection and automatic curve evaluation for wooden poles.

### Scope of Delivery (Standard):

- Measuring instrument PD with a mounted drilling needle
- Handle
- 82 ft (25m) standard memory
- Quiver with 10 drilling needles
- 220V battery charger Li-Ion 18V
- 2x premium 18V 5,0 Ah Li-Ion batteries
- Mini-USB 2.0 data transfer cable
- Drill chuck with tools
- Pliers
- System transport case
- IML Software Center PD-Tools (incl. 3 installation licences)
- Instructions manual



IML-RESI PD400



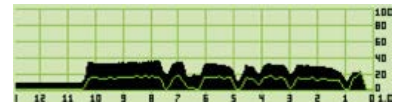
Integrated 45° adapter

|   |                      |             |
|---|----------------------|-------------|
| IML-RESI PD300<br>Drilling depth 11.8 inches (300 mm)   | Item No. 3100900-3PD | \$ 8,135.00 |
| IML-RESI PD400<br>Drilling depth 15.7 inches (400 mm)   | Item No. 3100900-4PD | \$ 8,650.00 |
| IML-RESI PD500<br>Drilling depth 19.7 inches (500 mm)   | Item No. 3100900-5PD | \$ 8,950.00 |
| IML-RESI PD600<br>Drilling depth 23.6 inches (600 mm)   | Item No. 3100900-6PD | \$ 9,270.00 |
| IML-RESI PD750<br>Drilling depth 29.5 inches (750 mm)   | Item No. 3100900-7PD | \$ 9,780.00 |
| IML-RESI PD1000<br>Drilling depth 39.4 inches (1000 mm) | Item No. 3100900-8PD | \$11,350.00 |

# Optional Add-Ons

IML-RESI PD-Series

## FEED Measurement



Additional recording of the feed curve (compressive force) next to the drilling curve (torsional force). In some cases the feed curve contains a significantly reduced curve or no shaft friction at all acting on the drilling needle. This means that it is considerably easier to detect the difference between healthy and damaged wood. In addition, it is easier to diagnose rot on the feed curve at an early stage.

FEED Measurement Item No. 4100017 **\$ 475.00**

## TLT Tilt Sensor



Tilt angle display and storage. Optional tilt compensation in the drilling depth preselection.

TLT Tilt Sensor Item No. 4100018 **\$ 265.00**

## SCL Scaling Package



Scaling of the drilling depth on a scale of 1:1, magnification, and overall view (full drilling depth on display width).  
Scaling of the amplitude to a fixed factor of 1.0 / 1.5 / 2.0 / 2.5 / 3.0 or automatic scaling.

SCL Scaling Package Item No. 4100019 **\$ 265.00**

## NC Needle Check



Automatic check of needle tip for breakage and wear before every measurement. Different wear tolerances can be selected when ordering. The status of the needle ('ok' / 'worn') is stored with each measurement.

NC Needle Check Item No. 4100015 **\$ 815.00**

## MEM Memory Enlargement

Memory Enlargement MEM1\*  
164 feet (50 m) recording length of the measurement curves Item No. 4100008 **\$160.00**

Memory Enlargement MEM2\*  
328 feet (100 m) recording length of the measurement curves Item No. 4100009 **\$295.00**

Memory Enlargement MEM3\*  
590 feet (180 m) recording length of the measurement curves Item No. 4100010 **\$ 495.00**

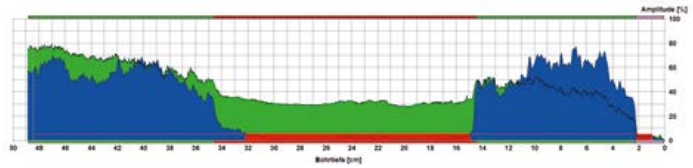
\* Please note that installing the feed module will reduce the available memory by 50%. This is due to the additional data recorded for the feed curve.

# IML Software & Optional Add-Ons

IML-RESI PD-Series

## IML Software Center PD-Tools **PRO**

Extended evaluation software



Functions PD-Tools Standard:

- Configuration
- Transfer
- Analysis
- Magnification
- Print-out and saving

Additional functions PRO version:

- Export of several measurements
- Averaging
- Multi-printing
- Cavity detector
- Tree-ring analysis
- Live display during drilling on a PC or handheld device

IML Software Center PD-Tools PRO  
incl. 3 installation licences

Item No. 3100808 **\$ 950.00**

Each additional license

Item No. 3100890 **\$ 220.00**

## WoodInspector incl. PD-Tools **PRO**



The IML WoodInspector is an additional module for the PD-Tools PRO software package. An automatic assessment of wooden poles is performed by the IML WoodInspector. Its features are: graphic and numerical cavity detection, detection of decay and incipient decay, evaluation of the data feed, automatic diameter detection for automatic withdrawal of the drilling needle after exiting below a particular drilling angle, displaying the drilling result immediately after drilling, individual user adjustment.

IML WoodInspector incl. PD-Tools PRO

Item No. 3100814 **\$ 1,570.00**

IML WoodInspector Complete Package  
incl. IML WoodInspector, FEED, TLT, SCL and ACS

Item No. 3100815 **\$ 2,300.00**

## ACS Access Control



Locks of almost all functions and settings with a password prompt. Avoids an unintentional change of device settings.

ACS Access Control

Item No. 4100020 **\$ 150.00**

## RCI API (application programming interface)

Interface for configuration, control and data transfer to customer software (not using PD-Tools/PD-Tools PRO). The data may be processed further directly by the customer software.

RCI API

Item No. 3100807 **\$ 1,565.00**

# Optional Accessories

IML-RESI PD-Series

## Shoulder Strap

Shoulder strap with 2 snap hooks and 2 sturdy eyelets on the instrument



Shoulder Strap

Item No. 30009903

\$ 77.50

## Transport Bag

Transport bag with belt for IML-RESI PD instrument with practical side pockets for batteries, pliers and quiver



Transport Bag for IML-RESI PD300 / PD400

Item No. 4100047

\$ 205.00

Transport Bag for IML-RESI PD500

Item No. 4100053

\$ 220.00

## Screenprotector

For display protection



Screenprotector

Item No.4100058

\$ 72.00

## Cleaning Tool

Tool for cleaning the front adapter



Cleaning Tool with Brush

Item No. 4100056

\$ 26.00

## Frontadapter 25 / 45 / 60 mm

Frontadapter with 25 / 45 / 60 mm extension



Frontadapter 25 mm

Item No.3100932-25

\$ 175.00

Frontadapter 45 mm

Item No.3100932-45

\$ 175.00

Frontadapter 60 mm

Item No.3100932-60

\$ 175.00

## Tree marker numbering set for drillings

Tree mark numbering set for drilling, Set of 19 tree tags. 8 cardinal points marked, 10 tree marks from 1-10, one tree mark for reference measurement



Item No. 4100056

\$ 20.50

# Optional Accessories

IML-RESI PD-Series

## Bluetooth Printer 2.0

Print out the measurements on site at a scale of 1:1 on thermal paper strips



Bluetooth Printer  
Includes 10 thermal paper rolls

Item No. 4100114 **\$ 1,145.00**

## Quiver for Drilling Needles

For safe storage of approximately 50 drilling needles



IML-RESI PD200 / PD300 / PD400

Item No. 3104017 **\$ 46.00**

IML-RESI PD500

Item No. 3105020 **\$ 46.00**

IML-RESI PD600

Item No. 3105017 **\$ 46.00**

IML-RESI PD750

Item No. 3105018 **\$ 46.00**

IML-RESI PD1000

Item No. 3105019 **\$ 46.00**

## System Transport Case

Stable system transport case with foam insert and key



IML-RESI PD200 / PD300

Item No. 3100413 **\$ 395.00**

IML-RESI PD400

Item No. 3100711 **\$ 400.00**

IML-RESI PD500

Item No. 3100811 **\$ 430.00**

IML-RESI PD600

Item No. 3100812 **\$ 445.00**

IML-RESI PD750

Item No. 3100911 **\$ 465.00**

IML-RESI PD1000

Item No. 3100912 **\$ 480.00**

## Premium Battery

Spare battery

Premium Battery 18V Li-Ion 5,0 Ah



Item No. 30009999 **\$ 295.00**

## Fast Charger for Premium Batteries with Li-Ion Technology 110V - 220V

Only for premium 18V batteries with Li-Ion technology in the MD, F and PD series



Fast Charger 220V for 18V Li-Ion Premium Batteries

Item No. 30009932 **\$ 170.00**

Fast Charger 110V with US Plug for 18V Li-Ion Premium Batteries

Item No. 30009934 **\$ 170.00**

# Disposables

IML-RESI PD-Series – Drilling needles with a special and improved surface coating

## Standard Drilling Needles,Click'

For tree & construction wood inspection (10 pieces per pack)



|                 |                                  |                  |           |
|-----------------|----------------------------------|------------------|-----------|
| IML-RESI PD200  | (Ø 3,0 mm tip / length: 422 mm)  | Item No. 3100339 | \$ 230.00 |
| IML-RESI PD300  | (Ø 3,0 mm tip / length: 422 mm)  | Item No. 3100340 | \$ 230.00 |
| IML-RESI PD400  | (Ø 3,0 mm tip / length: 521 mm)  | Item No. 3100341 | \$ 245.00 |
| IML-RESI PD500  | (Ø 3,0 mm tip / length: 688 mm)  | Item No. 3100342 | \$ 245.00 |
| IML-RESI PD600  | (Ø 3,0 mm tip / length: 795 mm)  | Item No. 3100343 | \$ 260.00 |
| IML-RESI PD750  | (Ø 3,0 mm tip / length: 947 mm)  | Item No. 3100344 | \$ 275.00 |
| IML-RESI PD1000 | (Ø 3,0 mm tip / length: 1271 mm) | Item No. 3100345 | \$ 295.00 |

## Drilling Needles ,Click' for Pole Inspection

For pole inspection (10 pieces per pack)



|                 |                                  |                  |           |
|-----------------|----------------------------------|------------------|-----------|
| IML-RESI PD200  | (Ø 3,0 mm tip / length: 421 mm)  | Item No. 3100349 | \$ 195.00 |
| IML-RESI PD300  | (Ø 3,0 mm tip / length: 421 mm)  | Item No. 3100350 | \$ 195.00 |
| IML-RESI PD400  | (Ø 3,0 mm tip / length: 520 mm)  | Item No. 3100351 | \$ 200.00 |
| IML-RESI PD500  | (Ø 3,0 mm tip / length: 687 mm)  | Item No. 3100352 | \$ 200.00 |
| IML-RESI PD600  | (Ø 3,0 mm tip / length: 794 mm)  | Item No. 3100353 | \$ 225.00 |
| IML-RESI PD750  | (Ø 3,0 mm tip / length: 946 mm)  | Item No. 3100354 | \$ 240.00 |
| IML-RESI PD1000 | (Ø 3,0 mm tip / length: 1270 mm) | Item No. 3100355 | \$ 255.00 |

## Thermal-Paper Rolls

Thermal-paper rolls for IML-RESI PD-Series Bluetooth printers (10 rolls per pack)



|  |                  |          |
|--|------------------|----------|
| For Bluetooth Printer 1.0 (25m per roll) | Item No. 3100336 | \$ 47.50 |
| For Bluetooth Printer 2.0 (12m per roll) | Item No. 3100337 | \$ 47.50 |

Do you have a device with  
Threaded Drilling Needles?  
Please contact us: [info@iml-na.com](mailto:info@iml-na.com)

# Spare Parts

IML-RESI PD-Series

## 45° Adapter

Aluminium adapter

45° Adapter



Item No. 3100932

\$ 78.50

## Front Adapter

Complete front adapter made of brass

Front Adapter without Measuring Sleeve



Item No. 3100937

\$ 160.00

## Tool Kit Front Adapter

Tool kit for the exchange of the measuring sleeve

Tool Kit Front Adapter Tree

incl. tool and 2x measuring sleeves



Item No. 4000158

\$ 48.50

Tool Kit Front Adapter Pole

incl. tool and 2x measuring sleeves

Item No. 4000163

\$ 48.50

Measuring Sleeves Tree 10 pieces

Item No. 4000162

\$ 81.00

Measuring Sleeves Pole 10 pieces

Item No. 4000165

\$ 81.00

## Handle

Additional handle which can be attached to the device in different positions

Handle



Item No. 4100024

\$ 80.00

# Spare Parts

IML-RESI PD-Series

## Exchangeable Telescope

Exchangeable telescope



|                                |                  |             |
|--------------------------------|------------------|-------------|
| IML-RESI PD200 / PD300 / PD400 | Item No. 4100016 | \$ 650.00   |
| IML-RESI PD500                 | Item No. 4100021 | \$ 790.00   |
| IML-RESI PD600                 | Item No. 4100031 | \$ 790.00   |
| IML-RESI PD750                 | Item No. 4100022 | \$ 980.00   |
| IML-RESI PD1000                | Item No. 4100023 | \$ 1.155,00 |

## Exchangeable Drill Click Chuck

Exchangeable drill chuck with Click system

Exchangeable Drill Chuck for all PD-Series Instruments



|                    |           |
|--------------------|-----------|
| Item No. 10500-048 | \$ 265.00 |
|--------------------|-----------|

## Exchangeable Drill Click Chuck with Tool

Exchangeable drill click Chuck with tool



|                        |                       |           |
|------------------------|-----------------------|-----------|
| IML-RESI PD200 - PD750 | Item No. 10500-048/3  | \$ 475.00 |
| IML-RESI PD1000        | Item No. 10500-048/10 | \$ 475.00 |

## Disinfection Adapter

Adapter for disinfecting the drilling needle

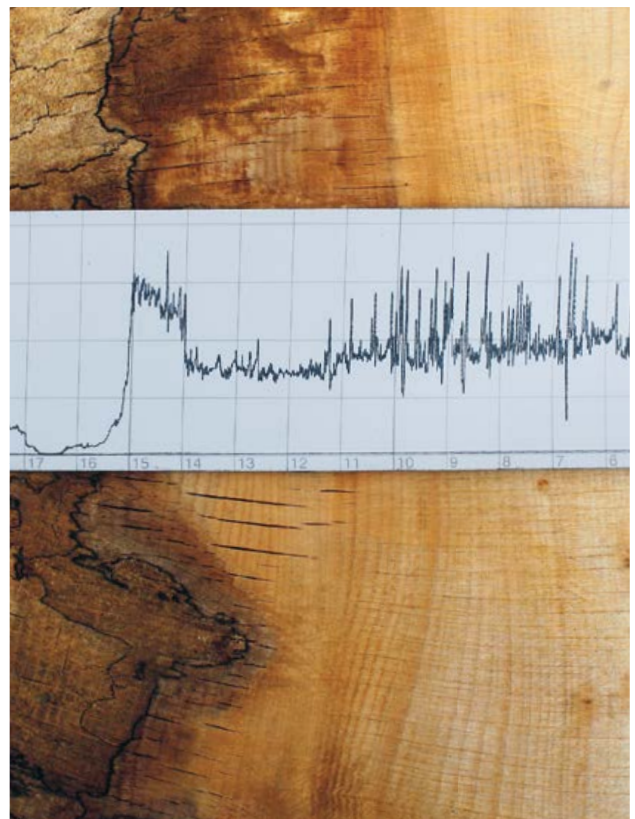


|   |                    |           |
|---|--------------------|-----------|
| Disinfection Adapter for Standard Drilling Needles        | Item No. 4100043   | \$ 145.00 |
| Disinfection Adapter for Pole Inspection Drilling Needles | Item No. 4100042   | \$ 145.00 |
| Felt Wheels 10 Pieces                                     | Item No. 4100044   | \$ 16.50  |
| Adapter for Telescope Key                                 | Item No. 10500-025 | \$ 29.00  |



# IML-RESI F-Series

Compact and flexible use



# IML-RESI F-Series

Compact and flexible use

## IML-RESI F-Series

The IML-RESI F-Series can be used anywhere where reliable and meaningful test results are required.

- Cordless drill as a drive unit
- On-site documentation of measurement results
- Recording of the measurement curve on weather-proof wax paper strips
- Low weight ensures efficient operation even in difficult operational areas
- Splash-proof stainless steel housing with plexiglass cover to protect the measurement record
- Measurements below 45° using snap-on adapter for drills with construction wood configuration

The IML-RESI F-Series offers two models:

- Tree inspection
- Construction wood



IML-RESI F400S



The F-Series is available in two enhanced versions: the S-Version for frequent hardwood use and the SX-Version with improved needle guidance.

Scope of Delivery (Tree Inspection):

- F-Series measurement device with mounted drilling needle
- Bosch drill GSR 18V Li-Ion Professional with adapter ring
- 220V Charger Li-Ion 18V and 2x 18V Li-Ion 5,0 Ah batteries
- Shoulderstrap
- 10x drilling needles
- 400x wax paper strips
- Papercassette
- Tool kit for maintenance
- System transport case
- Instructions manual

Scope of Delivery (Construction Wood):

- F-Series measurement device with mounted drilling needle for 45° Adapter
- Bosch drill GSR 18V Li-Ion Professional with adapter ring
- 220V Charger Li-Ion 18V and 2x 18V Li-Ion 5,0 Ah batteries
- Shoulderstrap
- 45°Adapter
- 10x drilling needles for 45° Adapter
- 400x wax paper strips
- Papercassette
- Tool kit for maintenance
- System transport case
- Instructionsmanual

# IML-RESI F-Series

For Tree Inspection



## IML-RESI F-Series for Tree Inspection

|  |                     |             |
|--|---------------------|-------------|
| IML-RESI F300<br>Drilling depth 11.8 inches (300 mm) | Item No. 3100800-3S | \$ 4,100.00 |
| IML-RESI F400<br>Drilling depth 15.7 inches (400 mm) | Item No. 3100800-4S | \$ 4,550.00 |
| IML-RESI F500<br>Drilling depth 19.7 inches (500 mm) | Item No. 3100800-5S | \$ 5,100.00 |

## IML-RESI FS-Series for Tree Inspection (Reinforced S-Version)

|   |                     |             |
|---|---------------------|-------------|
| IML-RESI F300S<br>Drilling depth 11 inches (280 mm)   | Item No. 3100810-3S | \$ 4,450.00 |
| IML-RESI F400S<br>Drilling depth 15 inches (380 mm)   | Item No. 3100810-4S | \$ 4,900.00 |
| IML-RESI F500S<br>Drilling depth 18.9 inches (480 mm) | Item No. 3100810-5S | \$ 5,400.00 |

## IML-RESI FSX-Series for Tree Inspection (Reinforced SX-Version)

|  |                      |             |
|--|----------------------|-------------|
| IML-RESI F300SX<br>Drilling depth 11 inches (280 mm)   | Item No. 3100810-3SX | \$ 5,150.00 |
| IML-RESI F400SX<br>Drilling depth 15 inches (380 mm)   | Item No. 3100810-4SX | \$ 5,550.00 |
| IML-RESI F500SX<br>Drilling depth 18.9 inches (480 mm) | Item No. 3100810-5SX | \$ 6,100.00 |

# IML-RESI F-Series

For Construction Wood Inspection



## IML-RESI F-Series for Construction Wood

|  |                     |             |
|--|---------------------|-------------|
| IML-RESI F300<br>Drilling depth 11.8 inches (300 mm) | Item No. 3100900-3S | \$ 4,300.00 |
| IML-RESI F400<br>Drilling depth 15.7 inches (400 mm) | Item No. 3100900-4S | \$ 4,700.00 |
| IML-RESI F500<br>Drilling depth 19.7 inches (500 mm) | Item No. 3100900-5S | \$ 5,200.00 |

## IML-RESI FS-Series for Construction Wood (Reinforced S-Version)

|   |                     |             |
|---|---------------------|-------------|
| IML-RESI F300S<br>Drilling depth 11 inches (280 mm)   | Item No. 3100910-3S | \$ 4,650.00 |
| IML-RESI F400S<br>Drilling depth 15 inches (380 mm)   | Item No. 3100910-4S | \$ 5,100.00 |
| IML-RESI F500S<br>Drilling depth 18.9 inches (480 mm) | Item No. 3100910-5S | \$ 5,550.00 |

## IML-RESI FSX-Series for Construction Wood (Reinforced SX-Version)

|  |                      |             |
|--|----------------------|-------------|
| IML-RESI F300SX<br>Drilling depth 11 inches (280 mm)   | Item No. 3100910-3SX | \$ 5,300.00 |
| IML-RESI F400SX<br>Drilling depth 15 inches (380 mm)   | Item No. 3100910-4SX | \$ 5,750.00 |
| IML-RESI F500SX<br>Drilling depth 18.9 inches (480 mm) | Item No. 3100910-5SX | \$ 6,200.00 |

# Disposables

IML-RESI F-Series

## Standard Drilling Needles

With special and improved surface coating  
(10 pieces per pack)



|                       |                                 |                  |           |
|-----------------------|---------------------------------|------------------|-----------|
| IML-RESI F300 / F300S | (Ø 3,0 mm tip / length: 370 mm) | Item No. 3100316 | \$ 185.00 |
| IML-RESI F400 / F400S | (Ø 3,0 mm tip / length: 480 mm) | Item No. 3100416 | \$ 200.00 |
| IML-RESI F500 / F500S | (Ø 3,0 mm tip / length: 590 mm) | Item No. 3100516 | \$ 215.00 |

## Standard Drilling Needles for 45° Adapter

With special and improved surface coating  
(10 pieces per pack)



|                                |                                 |                  |           |
|--------------------------------|---------------------------------|------------------|-----------|
| IML-RESI F300 / F300S / F300SX | (Ø 3,0 mm tip / length: 387 mm) | Item No. 3100317 | \$ 200.00 |
| IML-RESI F400 / F400S / F400SX | (Ø 3,0 mm tip / length: 497 mm) | Item No. 3100417 | \$ 215.00 |
| IML-RESI F500 / F500S / F500SX | (Ø 3,0 mm tip / length: 607 mm) | Item No. 3100517 | \$ 235.00 |

## Drilling Needles for Pole Inspection for 45° Adapter

With special and improved surface coating  
(10 pieces per pack)



|                                |                                 |                  |           |
|--------------------------------|---------------------------------|------------------|-----------|
| IML-RESI F300 / F300S / F300SX | (Ø 3,0 mm tip / length: 387 mm) | Item No. 3100319 | \$ 155.00 |
| IML-RESI F400 / F400S / F400SX | (Ø 3,0 mm tip / length: 497 mm) | Item No. 3100419 | \$ 165.00 |
| IML-RESI F500 / F500S / F500SX | (Ø 3,0 mm tip / length: 607 mm) | Item No. 3100519 | \$ 175.00 |

## Wax Paper Strips available in cm and in

Wax paper strips in cm and in (400 pieces per pack)



|                                       |  |                  |           |
|---------------------------------------|--|------------------|-----------|
| IML-RESI F300 / F300S / F300SX (Inch) |  | Item No. 3100318 | \$ 245.00 |
| IML-RESI F400 / F400S / F400SX (Inch) |  | Item No. 3100418 | \$ 245.00 |
| IML-RESI F500 / F500S / F500SX (Inch) |  | Item No. 3100518 | \$ 245.00 |
| IML-RESI F300 / F300S / F300SX (cm)   |  | Item No. 3100315 | \$ 245.00 |
| IML-RESI F400 / F400S / F400SX (cm)   |  | Item No. 3100415 | \$ 245.00 |
| IML-RESI F500 / F500S / F500SX (cm)   |  | Item No. 3100515 | \$ 245.00 |

# Optional Accessories

IML-RESI F-Series

## Bosch Drill

Drive unit for IML-RESI F-Series

Bosch Drill GSR 18V Li-Ion Professional with Special Adapter  
incl. charger, 2x Premium Li-Ion 18V 5,0 Ah batteries, adapter ring and instructions



Item No. 31000118 \$ 495.00

## Quiver for Drilling Needles

For safe storage of approximately 50 drilling needles

IML-RESI F300 / F300S / F300SX



Item No. 3103016 \$ 46.50

IML-RESI F400 / F400S / F400SX

Item No. 3104016 \$ 46.50

IML-RESI F500 / F500S / F500SX

Item No. 3105016 \$ 46.50

## System Transport Case

Transport case with foam insert and key



IML-RESI F300 / F300S / F300SX

Item No. 3100313 \$ 380.00

IML-RESI F400 / F400S / F400SX

Item No. 3100413 \$ 395.00

IML-RESI F500 / F500S / F500SX

Item No. 3100413 \$ 395.00

## Shoulder Strap

Shoulder strap with 2 snap hooks and 2 sturdy eyelets on the instrument



Shoulder Strap

Item No. 30009903 \$ 77.50

Eyelets for Shoulder Strap

Item No. 4100036 \$ 18.50

## Premium battery

For Bosch Drill GSR 18V Li-Ion Professional



Premium Battery 18V Li-Ion 5,0 Ah

Item No. 30009999 \$ 295.00

## Fast Charger for Premium Batteries Li-Ion Technology 110V - 220V

Only for premium 18V batteries with Li-Ion technology



Fast Charger 220V for 18V Li-Ion Premium Batteries

Item No. 30009932 \$ 170.00

Fast Charger 110V with US Plug for 18V Li-Ion Premium Batteries

Item No. 30009934 \$ 170.00

# Spare Parts

IML-RESI F-Series

## 45° Adapter

Snap-on adapter allows measurements below 45° to the ground level

45° Adapter  
incl. sleeve, extension of needle guidance and assembly instructions



Item No. 3100015

\$ 200.00

## Tool Kit

Tool kit for minor maintenance and repair operations

1 component pliers, pin punch, screwdriver 4 mm, 1 hexagon pin spanner with t-handle 2,5 mm, 1 hexagon wrench 1,5 mm & 2,0 mm, hook spanner, 1x clutch set, 6 casing screws, 5 safety pins and 1 oil can, 1x hook wrench



Tool Kit

Item No. 3100010

\$ 165.00

## Safety Pins

Safety Pins for overload protection (10 pieces per pack)

Safety Pins



Item No. 3800-059

\$ 22.50

## Clutch

Clutch Cover



Item No. 3800-065

\$ 7.50

## Clutch Set

2x clutch discs, 1x clutch bushing, 1x clutch nut,  
3x faceplates 0,5, 2x nord lock discs, 1x disassembly magnet



Clutch Set

Item No. 3800-111

\$ 30.00

## Exchangeable Telescope

Exchangeable telescope



IML-RESI F300SX / F400SX

Item No. 4100016F

\$ 675.00

IML-RESI F500SX

Item No. 4100017F

\$ 675.00

# IML Fractometer I

Bending strength measurement

## IML Fractometer I

---

The IML Fractometer I measures the bending strength of a previously removed wood core sample. The measuring range extends over 150FU (fractometer units). Different bending forces are adjustable by means of an adjustment wheel.

Scope of Delivery:

- Fractometer I
- Leather pouch
- Instructions manual

IML Fractometer I



---

Item No. 4000100

\$ 1,250.00



# IML Fractometer II

Bending and compression strength measurement

## IML Fractometer II Complete Set

The IML Fractometer II measures the bending and compression strength of a previously removed wood core sample.

Scope of Delivery:

- Fractometer II, cutting knife, tweezers, cutting board, test pin, instructions manual
- Jim-Gem increment borer (drilling depth: 11.8 in / 400 mm) with instructions manual
- Extension and pull-off loops for the taking core samples
- IML probing rod with extension (length: 35.4 in / 900 mm)
- Maintenance kit with 6 x wooden supporting battens, 1x glue can, 1x oil can, 1x ejector for cores, 1x grind-stone for interior of drill, 1x grindstone for exterior of drill, 1x cleaning brush with extension and 2x spare bolts for increment borer
- Aluminium transport case with foam insert and key



IML Fractometer II Complete Set

Item No. 4000250

\$ 3,750.00

## IML Fractometer II

The IML Fractometer II measures the bending and compression strength of a previously removed wood core sample.

Scope of Delivery:

- Fractometer II
- Cutting knife
- Tweezers
- Cutting boards
- Test pin



IML Fractometer II

Item No. 4000200

\$ 2,850.00

IML Fractometer II  
with aluminium transport case, foam insert and key

Item No. 4000202

\$ 3,150.00

# Jim-Gem Increment Borer

Extraction of core samples

## Increment Borer Jim-Gem

---

Jim-Gem increment borers are used for taking core samples and thus checking the quality of the wood and measuring the growth rate of trees. The increment borers are manufactured from special steel and Teflon coated to prevent friction heat (important for inspecting standing / sap conducting trees).

- Drilling depth: 15.7 inches (400 mm)
- Cutting edge: 3-helical
- Core diameter: 5,0 mm

Scope of Delivery:

- Increment borer with shank, drill and needle
- Instructions manual



Increment Borer Jim-Gem  
Drilling depth 15.7 inches (400 mm)

Item No. 4000121

\$ 385.00

---

## Increment Borer Jim-Gem Complete Set

---

Scope of Delivery for Complete Maintenance Set:

Jim-Gem increment borer (drilling depth: 15.7 inches / 400 mm, 3-helical blade) with shank, drill and needle, 1x ejector, 1x grindstone for interior of drill, 1x grindstone for exterior of drill, 1x oil can, 1x cleaning brush with extension, 2x spare bolts and 6x supporting battens of wood with glue can



Complete Maintenance Set

Item No. 4000126

\$ 565.00

---

# Optional Accessories

Jim-Gem increment borer

## Maintenance Set

Maintenance set for Jim-Gem increment borer



Scope of Delivery for Individual Maintenance Set:

1x ejector for drilling cores, 1x grinding wheel for drills inside, 1x grindstone for interior of drill, 1x grindstone for exterior of drill, 1x oil can, 1x cleaning brush with extension and 2x spare bolts

Maintenance Set Jim-Gem

Item No. 4000127

\$ 185.00

## Extension and Pull-Off Loops

Extension to increase the leverage effect when screwing the increment borer in and out



Extension and Pull-Off Loops for Jim-Gem Increment Borer

Item No. 4000145

\$ 240.00

## Ejector

Ejector for damage-free extraction of the drill cores from the increment borer



Ejector for Jim-Gem Increment Borer

Item No. 4000128

\$ 25.00

# IML Micro Hammer

Sound velocity measurement

## IML Micro Hammer

The IML Micro Hammer is a preliminary inspection device for living trees. A hammer will generate a pulse that is detected and measured by microsensors.

### Application Areas:

- Tree care and inspection to maintain safe parks, roadways and forests
- Assessment of tree damages

### Scope of Delivery:

- Electronic unit in a shock-resistant, water-proof housing
- Hammer (pulse generator) and microsensor (pulse receiver)
- 10x stainless steel fixing screws
- 4x magnets for sensor mounting
- Charger 110V - 240V
- Bosch Mini Cordless Screwdriver IXO 3,6V with charger and manual
- Aluminium transport case
- Instructions manual
- IML Software Center M-Tools

Functions: Configuration and readout of the electronic unit, transmission, evaluation and storage of measurement data on a PC or handheld device

- 1x Magnetic impact cap
- 1x Bit Torx 15 (to fasten/loosen the screws)



|   |                   |             |
|---|-------------------|-------------|
| IML Micro Hammer<br>with 1 microsensor  | Item No. 41002004 | \$ 4,450.00 |
| IML Micro Hammer<br>with 3 microsensors | Item No. 41002005 | \$ 5,500.00 |
| IML Micro Hammer<br>with 6 microsensors | Item No. 41002006 | \$ 6,550.00 |

## Optional Add-Ons

### IML Micro Hammer

#### Add-On Module RCI (Remote Control Interface)

Interface for configuration, control and transfer data to and from internal client software (not using of M tools). The data may be further processed directly by the client software.

|  |                  |             |
|--|------------------|-------------|
| Add-On Module RCI (Remote Control Interface) | Item No. 3100807 | \$ 1,565.00 |
|--|------------------|-------------|

# Spare Parts

IML Micro Hammer

## Hammer

Replaceable hammer for IML Micro Hammer

Hammer



Item No. 4100109

\$ 645.00

## Microsensor

Replaceable microsensor for IML Micro Hammer

Microsensor



Item No. 4100110

\$ 595.00

## Magnetic Impact Cap

Magnetic impact cap for IML Micro Hammer

Magnetic Impact Cap



Item No. 4100107

\$ 21.00

## Magnet Set

Spare magnet with two mounting screws for IML Micro Hammer

Magnet Set



Item No. 4100106

\$ 16.00

## Mounting Screws

Stainless steel mounting screws, length 60 mm / Ø 4 mm (10 pieces per pack)

Mounting Screws



Item No. 4100108

\$ 30.00

## Bosch Mini-Screw Driver IXO Li-Ion

Mini-Screw Driver to insert mounting screws for IML Micro Hammer, incl. charger and manual

Bosch Mini-Screw Driver Li-Ion 3,6V



Item No. 4100111

\$ 136.50

## Charger with USB Connector (110V - 240V)

Charger for IML Micro Hammer

Charger with USB Connector



Item No. 4100011

\$ 105.00

## USB Cable

USB connection cable (length: 185 cm) for IML Micro Hammer

USB Cable



Item No. 4100012

\$ 85.00

# Service and Calibration

Annual service inspection

## Service and Calibration of IML Products

In order to guarantee the measuring accuracy of IML products, regular maintenance and calibration of measuring instruments should be carried out by our qualified service team. The inspection of measuring instruments should be carried out at yearly intervals.



Service and Calibration

An Inspection Includes:

- Complete function and safety test
- The unit is disassembled, the functional parts precisely controlled and checked
- All mechanical moving parts are cleaned and permanently lubricated with special LongLife oil
- Implementation of test measurements and final calibration
- Creation of a detailed service report and a calibration sheet / test report

## Service for ...

|   |                 |           |
|---|-----------------|-----------|
| IML-RESI PD-Series                          | Item No. 8888PD | \$ 380.00 |
| IML-RESI F-Series (without electronic unit) | Item No. 8888F  | \$ 255.00 |
| IML-RESI F-Series (with electronic unit)    | Item No. 8888FE | \$ 365.00 |
| IML-RESI E-Series                           | Item No. 8888E  | \$ 380.00 |
| IML-RESI M-Series                           | Item No. 8888M  | \$ 305.00 |
| IML-RESI B-Series                           | Item No. 8888B  | \$ 515.00 |
| IML Fractometer I                           | Item No. 8888FR | \$ 135.00 |
| IML Fractometer II                          | Item No. 8888FR | \$ 135.00 |
| IML Micro Hammer                            | Item No. 8888I  | \$ 215.00 |

# IML Tree Labels

Aluminum tree labels

## IML Tree Labels made of anodized Aluminum

The aluminum plates, laser-engraved to your specifications, are highly readable. The anodized coating ensures durability and longevity. IML Tree Labels are available in various colors and are made from scratch-resistant, weatherproof aluminum (AlMg1). The white laser-etched lettering is easily visible, even in bright sunlight. Each tree tag can be customized with your specific labeling requirements.

Item No. 4000170



IML Tree Labels in available colors

Label:

- Continuously numbered and optionally with additional text
- Logo or symbol
- QR-Code
- Number ranges or Excel list

Dimensions:

- Diameter: 35 mm
- Thickness: 1 mm
- Mounting hole: 4 mm
- Label field: 30 x 25 mm

|   |                    |          |
|---|--------------------|----------|
| IML Tree Labels 100 pieces                    | per piece          | \$ 1.65  |
| IML Tree Labels 250 pieces                    | per piece          | \$ 1.45  |
| IML Tree Labels 500 pieces                    | per piece          | \$ 1.25  |
| IML Tree Labels 1.000 pieces                  | per piece          | \$ 1.20  |
| IML Tree Labels 2.500 pieces                  | per piece          | \$ 1.15  |
| IML Tree Labels 5.000 pieces                  | per piece          | \$ 1.10  |
| IML Tree Labels 10.000 pieces                 | per piece          | \$ 1.05  |
| Setup Costs According to Template / per Order | Item No. 4000167   | \$ 45.00 |
| Preparation of your Logo for Laser Marking    | Item No. 20100-161 | \$ 77.50 |

## Extension Hammer for Tree Labels

for the easy and quick attachment of tree labels. Length: 95 cm

Extension Hammer



Item No. 4000169

\$ 265.00

## Aluminum Nails incl. O-Ring

to fix the tree labels. Length: 75 mm, Diameter 3 mm

Aluminum Nails incl. O-Ring (per package / 100 pieces)



Item No. 4000168

\$ 20.50

# IML Measuring Table

Annual ring analysis

## IML Measuring Table

The IML Measuring Table is used for studying the growth rate of wood samples. An easy-to-use electronic unit helps do the evaluation, as well as an optional microscope for analysis of very low growth rates.

### Scope of Delivery:

- Measuring table
  - Electronic unit with serial data transfer cable and charger 110V-240V
  - 2x recording strips for cores (wood support strips)
  - Instructions manual
  - IML Software Center T-Tools PRO
- Functions: Configuration and readout of electronic unit, transfer, evaluation, storage, magnification and printing of measurement data on a PC or laptop



IML Measuring Table



IML Measuring Table with Leica Microscope

The IML Measuring Table can be optionally extended with 2 microscopes, an analogue and a digital version

Leica S9E L2 Zoom Stereo Microscope:  
incl. mounting on IML measuring table

- Viewing angle: 35°
- Lens: 0,63x, achromatic
- Magnification: max. 55x zoom
- Max. resolution: 500 LP/mm
- Max. aperature: 0144 nA
- Field of view / distance: 36,5 mm / 55 mm

|   |                  |              |
|---|------------------|--------------|
| IML Measuring Table<br>without microscope   | Item No. 5000200 | \$ 4,950.00  |
| IML Measuring Table<br>incl. Leica S9E L2 zoom stereo microscope with focusing column | Item No. 5000202 | \$ 9,550.00  |
| IML Measuring Table<br>incl. Leica S9E L2 zoom stereo microscope with swinging arm    | Item No. 5000204 | \$ 10,450.00 |



# Complete Kit for Treatment Quality Test

Inspection of treatment qualities in wooden poles

## Complete Kit for Treatment Quality Test

With the complete kit it is possible to detect treatment qualities and depths of wooden poles. A small core is being removed with the use of the test nail and the hammer. Afterwards a visual analysis of the core gives clarity of the treatment.



Complete Kit for treatment quality test  
- incl. 2x test nails, hammer, ejector, 100x plugs

Item No. 4000157

\$155.00

Test Nail Kit (2 pieces)

Item No. 4000153

\$ 31.00

Ejector

Item No. 4000154

\$ 48.00

Hammer

Item No. 4000155

\$ 48.00

Treated Plugs (100 pieces)

Item No. 4000156

\$ 15.00

# Pole & Tree Gauge

Multi-purpose accessories

## Pole & Tree Gauge

Diameter & damage detection instrument



Up to 50 cm Ø; Depth: 11 cm



Up to 65 cm Ø; Depth: 20,5 cm

Pole & Tree Gauge „Mini“

Item No. 4100064

\$ 37.00

Pole & Tree Gauge „Maxi“

Item No. 4100066

\$ 79.00

# IML Probe Rod

Tree inspection accessories

## IML Probe Rod

The IML Probe Rod assists you locate decay in trees. The robust stainless steel rod can be extended by up to 1500 mm by a threaded fitting. The standard length is 600 mm and the diameter is 7,0 mm. The IML Probe Rod also has a 100 mm scale.



|  |                  |          |
|--|------------------|----------|
| IML Probe Rod<br>Standard length 23.6 inches (600 mm)      | Item No. 4000147 | \$ 55.50 |
| Extension for IML Probe Rod<br>Length 11.8 inches (300 mm) | Item No. 4000148 | \$ 18.00 |

# IML Inspection Rod

Tree inspection accessories

## IML Inspection Rod

The IML Inspection Rod helps you locate decay in trees.  
Length: 800 mm; Diameter: 5,0 mm.



|   |                  |          |
|---|------------------|----------|
| IML Inspection Rod<br>Length 31.5 inches (800 mm) | Item No. 4000146 | \$ 20.00 |
|---|------------------|----------|

# IML Penetrometer

Tree inspection accessories

## IML Penetrometer

The IML Penetrometer is a mechanical gauge to determine the density of the soil. A 2.0 kg heavy falling weight is mounted on a 8.0 mm thick rod. The falling weight is dropped and encounters resistance, causing the rod to penetrate the ground. The penetration depth can be read by means of a scale.



IML Penetrometer

Item No. 4000149

\$ 455.00

# Stainless Steel Model / VTA-Pebble Hammer

Multi-purpose tool by Prof. Dr. Claus Mattheck and Dr. Klaus Bethge

## Stainless Steel Model for Tree Diagnosis

The stainless steel model is a multi-purpose tool for tree diagnosis. This tool measures the slenderness of tree trunks and branches. It may also be a non-dogmatic guide for shaping the crown of a tree according to the shape of brook pebbles. The model can show the highly loaded space under the tree determined with the force core method.



Stainless Steel Model



VTA-Pebble Hammer

Stainless Steel Model

Item No. 4000135

\$ 40.00

VTA-Pebble Hammer

Item No. 4000136

\$ 41.00

# The Body Language of Trees

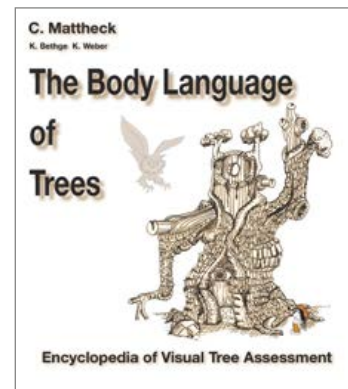
Technical literature

## The Body Language of Trees – Hardcover

The Encyclopedia of the Visual Tree Assessment and body language of trees. Their shape is always the reaction to external influences or internal damage and can be traced through close observation. The book brings together the research of 25 years at the Karlsruhe Institute of Technology in Germany by Prof. Dr. Claus Mattheck.

Author: Prof. Dr. Claus Mattheck  
ISBN: 978-3-923704-89-7  
Scope: 548 pages

Price excl. VAT



The Body Language of Trees

Item No. 300026e

\$ 145.00

# Pauli the Bear: Tree Mechanics

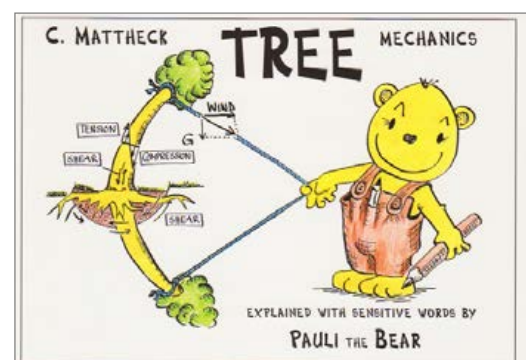
Technical literature

## Pauli the Bear: Tree Mechanics – Softcover

Pauli the Bear teaches you mechanical terms and shows how tensions are distributed in trees. See how trees fight against failure when they are hollow or too slim. More than 100 colorful illustrated pages.

Author: Prof. Dr. Claus Mattheck  
ISBN: 978-3923704392  
Scope: 130 pages

Price excl.VAT



Pauli the bear: Tree Mechanics

Item No. 300019e

\$ 35.00

# Thinking Tools after Nature

Technical literature

## Thinking Tools after Nature – Softcover

The book by Prof. Dr. Claus Mattheck is an easy-to-understand summary of his computer-free method of creating lightweight and durable components. Mattheck says, that these methods have changed his whole life.

Author: Prof. Dr. Claus Mattheck  
ISBN: 978-3-923704-73-6  
Scope: 236 pages

Price excl.VAT



Thinking Tools after Nature

Item No. 3000024e

\$ 60.00

# The Face of Failure in Nature and Engineering

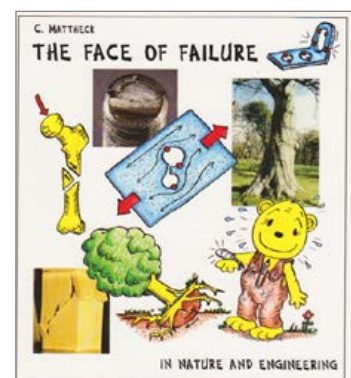
Technical literature

## The Face of Failure in Nature and Engineering – Softcover

The book introduces the mechanics of failure. It explains the stress between material and form. It sharpens your eyes for weak points in constructions and helps you to avoid damages by showing clever design rules.

Author: Prof. Dr. Claus Mattheck  
ISBN: 978-3923704415  
Scope: 208 pages

Price excl.VAT



The Face of Failure in Nature and Engineering

Item No. 3000020e

\$ 55.00

# Secret Design Rules of Nature

Technical literature

## Secret Design Rules of Nature – Softcover

See how components can be optimized or designed easily without a computer. Graphics and texts are in the typical style of Prof. Dr. Claus Mattheck.

Author: Prof. Dr. Claus Mattheck

ISBN: 978-3923704538

Scope: 138 pages

Price excl. VAT



Secret Design Rules of Nature

Item No. 3000021e

\$ 55.00

# Pauli Explains the Form in Nature

Technical literature

## Pauli Explains the Form in Nature – Hardcover

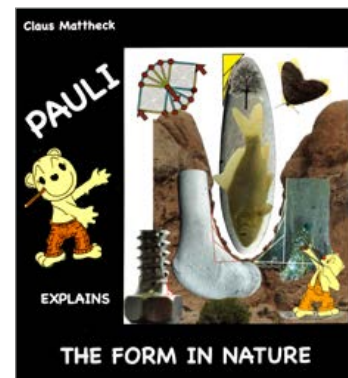
The enlightened view and a new understanding of design rule in nature!

Author: Prof. Dr. Claus Mattheck

ISBN: 978-3923704286

Scope: 244 pages

Price excl. VAT



English Summary Edition: Pauli Explains the Form in Nature

Item No. 3000030e

\$ 65.00

## Disclaimer

All information contained in this price list has been prepared with the utmost care. However, errors cannot be excluded. IML North America, LLC assumes neither legal responsibility nor any liability for the consequences of such errors or mistakes. The information contained herein may be modified without notice. No liability is accepted for printing or typographical errors.

This price list is valid until the publication of a new price list, subject to price corrections due to any technical improvements. This price list supersedes all previously valid price lists. Any kind of reproduction or processing by means of electronic systems, or distribution of the present or any part of it without prior written approval of IML North America, LLC is strictly prohibited. Product information in this price list is limited to a few fundamental properties and practical applications. Detailed information is available in our brochures or on our website:

[www.iml-na.com](http://www.iml-na.com). All prices quoted are exclusive of taxes, freight, packaging and insurance costs. Unless otherwise stated, all prices are in US Dollar per unit. All prices are subject to change. We deliver in accordance with our general terms and conditions. Changes with regard to better function, performance, durability and technical improvements are reserved. Update and repair prices are not included in this price list. The following products are similar to those in the illustrations.

## Sources

**Design:** Valentino Knopf - beready - [www.beready.online](http://www.beready.online)

**Images:** Valentino Knopf, & Artbuying - Sources on request

---

# General Conditions of Payment and Delivery

IML North America LLC

## 1. Agreement

All purchases for products and goods (and related services or maintenance) placed with IML North America, LLC ("IML") whether pursuant to a Purchase Order or if otherwise accepted by IML, shall be subject to these standard terms and conditions herein set forth. Unless otherwise expressly agreed to in writing, these terms and conditions shall override any terms or conditions stipulated, incorporated or referred to by the customer named on the first page of the purchase order (the "Purchaser") in the Purchaser's order or in any negotiations. These conditions, along with the purchase order (or invoice) and any attached schedules or exhibits, embody the entire agreement between IML and the Purchaser (the "Agreement"). Accordingly, any promises, representations or understandings not expressed herein shall be of no force or effect. No variation of, or addition to, these conditions shall be effective against IML unless expressly accepted or confirmed in writing of subsequent date hereto and signed by IML's duly authorized employee on IML's behalf, as further provided in Section 11 of this Agreement.

## 2. Authorization for Purchases

The undersigned is an authorized officer, representative or agent of Purchaser and is duly empowered and authorized to enter into and to make binding agreements on Purchaser's behalf.

## 3. Pricing Information

Purchaser's order is accepted only in accordance with this Agreement and all orders are subject to product availability. All prices are subject to change without prior notice. Invoices will be at the price in effect on the date of shipment unless otherwise expressly agreed to in writing by Purchaser and IML.

## 4. Payment, Delivery, Title, Risk of Loss, Security Interest

Payment in full shall be made to IML within thirty (30) days of a standard purchase order or invoice. For repair, payment in full shall be made to IML prior to IML returning the unit. The prices charged for the goods ordered hereunder are F.O.B. Moultonborough, New Hampshire (IML's premises). All orders will be sent via a carrier of IML's choosing, unless another method is specified by Purchaser in writing. Purchaser shall acquire title to the goods upon delivery of goods to carrier from IML's location and Purchaser shall bear the risk of loss or damage to the goods from and after the time of such delivery. Notwithstanding the passage of title upon delivery of goods to carrier, IML retains a security interest in the goods to secure payment of the charges incurred by Purchaser. Purchaser authorizes IML to perform lien searches, to contact Purchaser's secured creditors concerning the security interests granted herein and to file and record any financing statements necessary to perfect the security interests granted herein. Should Purchaser fail to pay all charges incurred, title to the goods shall revert to IML after forty-five (45) days. Purchaser shall be responsible for all shipping and related charges

## 5. Inspection of Goods; Nonconformity

Purchaser shall inspect each shipment promptly and shall notify IML in writing within five (5) days from receipt of the goods, of its rejection of all or any part of a shipment. All shipments, wherein Purchaser fails to give notice of rejection within such five (5) day period, shall be deemed accepted. Purchaser shall hold any rejected goods pending IML's instructions concerning the disposition of said goods. A return shipment of goods without prior approval from IML will be rejected.

## 6. Force Majeure.

Shipping dates are approximate and are not guaranteed IML will not be liable for any delay in the performance of orders or contracts, or in the delivery or shipment of goods, or for any damages suffered by Purchaser by reason of such delay, if such delay is, directly or indirectly, caused by, or in any manner arises from, fires, floods, accidents, civil unrest, acts of God, war, terrorism, governmental interference or embargoes, strikes, labor difficulties, shortage of labor, fuel, power, materials, or supplies, transportation delays, or any other cause or causes (whether or not similar in nature to any of these hereinbefore specified) beyond IML's control.

## 7. Warranties; Disclaimer of Warranties

IML WARRANTS THAT THE QUALITY OF GOODS PROVIDED PURSUANT TO THE PURCHASER SHALL BE FREE FROM DEFECTS IN MATERIAL OR WORKMANSHIP AND WILL REPAIR ANY AND ALL DEFECTS WITH THE PRODUCTS FOR A PERIOD OF 1 YEAR FOR NEW IML RESI UNITS AND 6 MONTHS FOR REFURBISHED UNITS FROM THE DATE OF DELIVERY TO PURCHASER. THIS WARRANTY IS MADE ONLY TO PURCHASER AND DOES NOT EXTEND TO ANYONE TO WHOM ANY PRODUCTS ARE SOLD AFTER PURCHASED FROM IML. THIS WARRANTY IS EXPRESSLY MADE IN LIEU OF ANY AND ALL WARRANTIES AND THE SOLE LIABILITY OF IML SHALL BE TO REPAIR OR REPLACE ANY PRODUCTS NOT MANUFACTURED TO THE ABOVE STATED STANDARDS. NO FURTHER WARRANTY OR GUARANTEE, EXPRESS OR IMPLIED, IS MADE. NOTWITHSTANDING THE FOREGOING, ANY ALTERATION MADE BY THE PURCHASER TO ANY OF THE GOODS

SHALL TERMINATE IML'S OBLIGATIONS UNDER THE WARRANTY. THIS SECTION SHALL SURVIVE ANY TERMINATION OF THE AGREEMENT

## 8. Indemnification.

Purchaser shall indemnify, defend and hold IML, its managers, members, officers, employees and affiliates harmless from and against any and all claims, losses, liabilities, damages, judgments, suits and all legal proceedings of any nature whatsoever and related attorneys fees including, but not limited to, any such claims, losses, liabilities, damages, judgments, suits and legal proceedings related to negligence, tort, strict liability, product liability, infringement, product recall, lost profits, loss of business, or any other consequential, special, indirect or punitive damages, and any and all costs and expenses in connection therewith arising out of: (a) improper selection, improper application of or other misuse of the products or goods purchased by Purchaser from IML; (b) any act or omission, negligent or otherwise, of Purchaser; or (c) Purchaser's failure to comply with this Agreement. Purchaser shall give IML immediate written notice of any claims, suits or actions instituted against Purchaser in anyway related to any product(s) sold pursuant to this Agreement, and IML shall have the right to participate in any such suit or action with counsel of its choice.



## 9. Limitation of Liability

IML WILL NOT BE LIABLE FOR PURCHASER'S LOST PROFITS, LOSS OF BUSINESS OR OTHER CONSEQUENTIAL, SPECIAL, INDIRECT OR PUNITIVE DAMAGES, EVEN IF ADVISED OF THE POSSIBILITY OF SUCH DAMAGES, OR FOR ANY CLAIM BY PURCHASER OR ANY OTHER PERSON, FIRM, ENTITY OR THIRD PARTY. PURCHASER'S EXCLUSIVE REMEDY IN THE EVENT THAT ANY OF THE PRODUCTS DO NOT CONFORM, EXCEPT WITHIN THE NINETY (90) DAY LIMITED WARRANTY PERIOD PROVIDED HEREIN, SHALL BE THE REPAIR OR REPLACEMENT OF THE GOODS UPON INSTRUCTIONS TO PURCHASER PURSUANT TO SECTION 7 OF THIS AGREEMENT, OR IN THE EVENT THAT REPAIR OR REPLACEMENT IS INADEQUATE AS MUTUALLY AGREED TO BY BOTH PARTIES HERETO OR AS DETERMINED BY A COURT OF COMPETENT JURISDICTION AND VENUE PURSUANT TO SECTION 14 OF THIS AGREEMENT, THEN PURCHASER AGREES THAT IML SHALL NOT BE LIABLE OR RESPONSIBLE FOR ANY AMOUNT OF DAMAGES ABOVE THE DOLLAR AMOUNT PAID BY PURCHASER FOR THE GOODS GIVING RISE TO THE CLAIM.

## 10. Interpretation

This Agreement constitutes the sole and entire agreement between Purchaser and IML with regard to the subject matter hereof. No course of prior dealings between the parties and no usage of trade shall be relevant or admissible to supplement, explain, or vary any of the terms of this Agreement. Acceptance of, or acquiescence in, a course of performance rendered under this or any prior agreement shall not be relevant or admissible to determine the meaning of this Agreement even though the accepting or acquiescing party has knowledge of the nature of the performance and an opportunity to make objection. No representations, understandings, or agreements have been made or relied upon in the making of this Agreement other than those specifically set forth herein.

## 11. Modifications

This Agreement may be modified only in an instrument of subsequent date hereto signed by the parties hereto specifically referencing this Section 11. Except as provided in the preceding sentence, it is a condition of this Agreement that any provisions, printed or otherwise, contained in any subsequent purchase orders from Purchaser, inconsistent with or in addition to the terms and conditions herein stated, and any alteration in this Agreement, shall have no force or effect. This Agreement contains the entire agreement of the parties, and failure of either party to enforce any of its rights hereunder shall not constitute a waiver of such rights or of any other rights hereunder. This Agreement shall be binding upon, and

## 12. Taxes

All amounts due for taxes and assessments will be added to the Purchaser's invoice and are the responsibility of the Purchaser.

No tax exemption will be granted unless the Purchaser's «Exemption Certificate» (or other official proof of exemption) accompanies the purchase order. If, after the Purchaser has paid the invoice, it is determined that more tax is due, then the customer must promptly remit the required taxes to the taxing authority, or immediately reimburse the provider for any additional taxes paid. IML shall not be liable for handling or customs charges for shipments outside the United States.

## 13. Cancellation and Termination

Purchaser may terminate this Agreement only upon delivery of written notice to IML and upon payment to IML of reasonable and proper termination and cancellation charges including, but not limited to: (a) the proportionate contract price for all products completed, whether shipped or not, prior to IML's receipt of such written notice of termination or cancellation; (b) all costs therefore incurred by IML in connection with special orders for products that are uncompleted at the time of IML's receipt of such written notice of termination or cancellation; (c) an amount equal to IML's expected profits on all such cancellations; and (d) the expenses incurred by IML by reason of such termination or cancellation, including reimbursement for any changes arising from termination of sub-contract claims.

## 14. Governing Law and Choice of Forum

This Agreement and any sale hereunder shall be governed by the laws of the State of New Hampshire, without regard to conflicts of laws rules or rulings and regardless of location of Purchaser. Any and all disputes, actions or litigation must be brought exclusively in New Hampshire and Purchaser consents to the exclusive jurisdiction of the federal and state courts located in New Hampshire, submits to jurisdiction there, and waives the right to request a change of venue. Purchaser agrees that such venue is appropriate and that IML's agreement to sell and deliver goods to Purchaser is dependent on this provision. Notwithstanding the foregoing, IML may seek equitable relief or legal damages in any jurisdiction and venue of its choice.

## 15. Acceptance

Acceptance of this offer is expressly limited to the exact terms contained herein and any attempt to alter or omit any of such terms shall be deemed a rejection and a counteroffer. Any additional or different terms in any forms delivered by Purchaser are hereby deemed to be material alterations and notice of objection to them and rejection of them is hereby given.

## 16. Partial Invalidation

If any provision of the Agreement shall be held to be invalid or unenforceable by a court of competent jurisdiction and venue, then such invalidity or unenforceability shall not invalidate or render the Agreement unenforceable, but rather the Agreement shall be construed as if not containing the invalid or unenforceable provision. However, if such provision is an essential element of the Agreement, then the parties shall promptly attempt to negotiate a substitute therefor.

## 17. Non-US or Export Sales

Sales of IML's goods must follow the Export Administration Regulations of the United States Commerce Department and applicable State Department restrictions. Purchaser represents and warrants that it is eligible to receive products under United States law and agrees to abide by any export or re-export restrictions imposed by IML. IML'S WARRANTIES FOR EXPORTED

PRODUCTS MAY VARY OR MAY BE NULL AND VOID FOR PRODUCTS EXPORTED OUTSIDE THE UNITED STATES



**With Passion and Precision**

Manufactured by IML - Germany

IML North America, LLC  
5 Water Street  
Meredith, NH 03253 USA

Phone: (+1) 603-253-4600  
E-Mail: [info@iml-na.com](mailto:info@iml-na.com)  
Web: [www.iml-na.com](http://www.iml-na.com)

